

# HERBERT SMITH FREEHILLS HAS ADVISED AMP CAPITAL DIVERSIFIED PROPERTY FUND ON A \$13.4B MERGER WITH DEXUS WHOLESALE PROPERTY FUND

16 March 2021 | Australia, Asia Pacific  
Deals and cases

---

Herbert Smith Freehills has advised AMP Capital Funds Management Limited, the responsible entity of AMP Capital Diversified Property Fund (**ADPF**) on its stapling merger with Dexus Wholesale Property Fund (**DWPF**).

As part of the stapling merger, AMP Capital Funds Management Limited will be replaced by Dexus Wholesale Property Limited as responsible entity of ADPF, and ADPF unitholders will have access to a special liquidity facility funded by the sale of certain ADPF assets and, at the conclusion of the special liquidity facility, which is expected to be 18 months after the change of responsible entity, ADPF and DWPF will be combined via stapling to form a large diversified wholesale property fund which is expected to have approximately A\$13.4bn in core real estate assets.

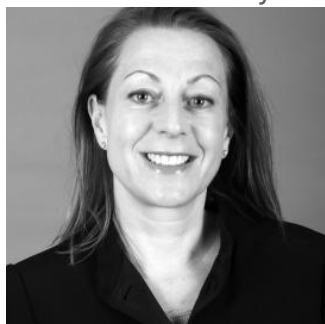
The parties have entered into an implementation agreement and the transaction is subject to relevant approvals by both ADPF and DWPF unitholders.

The Herbert Smith Freehills team was led by partner [Fiona Smedley](#) and included partners [Rebecca Maslen-Stannage](#) and [Erin Wakelin](#), consultant [James Graham](#), senior associate Yorick Ng, and solicitors Nicholas Gerovasilis, Hiroko Ito, and Hartley Spring.

[Fiona Smedley](#) said, “We are delighted to have had the opportunity to work with the independent board committee of the responsible entity of ADPF on this complex and unique transaction, and that the responsible entity of ADPF is now in a position to put a proposal to the vote of ADPF unitholders.”

## KEY CONTACTS

If you have any questions, or would like to know how this might affect your business, phone, or email these key contacts.



**FIONA SMEDLEY**  
PARTNER, SYDNEY

+61 2 9225 5828  
[Fiona.Smedley@hsf.com](mailto:Fiona.Smedley@hsf.com)



**REBECCA MASLEN-STANNAGE**  
CHAIR AND SENIOR  
PARTNER, SYDNEY

+61 2 9225 5500  
[Rebecca.Maslen-Stannage@hsf.com](mailto:Rebecca.Maslen-Stannage@hsf.com)



**ERIN WAKELIN**  
MANAGING PARTNER,  
SYDNEY

+61 2 9322 4266  
[Erin.Wakelin@hsf.com](mailto:Erin.Wakelin@hsf.com)

---

## MEDIA CONTACT

For further information on this news article, please contact:

**EMILY COULTAS, EXTERNAL  
COMMUNICATIONS MANAGER**

MELBOURNE

Tel: +61 3 9288 1594

Email: [emily.coultas@hsf.com](mailto:emily.coultas@hsf.com)