

RESPONSIBILITY INCORPORATED - GENERAL COUNSEL AND THE DAWNING ESG REVOLUTION

14 July 2021 | Insight
Guides

Our flagship report assesses the key ESG trends, drawing on interviews with 20 GCs. Includes nine themes set to dominate corporate agendas through the 2020s

We're delighted to share with you a major new report exploring the key trends and pressure points as general counsel mobilise to help companies tackle the high-stakes environmental, social and governance (ESG) agenda. Drawing on 20 extensive interviews with legal chiefs at major companies across the world, we explore the increasingly central role GCs are playing in what is set to be the defining business transformation challenge of the age.

Benchmarking varying attitudes, governance and tactics across a range of industries, the report breaks down the challenges of addressing the fast-moving ESG agenda into nine core themes and forecasts.

From the challenges of meeting investor demands, to policing high-risk global supply chains, to tackling the complexities of carbon reporting, our report assesses how some of the most seasoned and respected GCs are responding.

With investors, consumers, employees and nations all pressing companies to fulfil an expanding range of non-financial objectives, ESG will not only redefine business agendas for years, it promises to change the role of chief legal officers as much as the organisations around them. Packed with practical commentary from legal heads and our experts, Responsibility Incorporated charts the journey ahead.

SHARE

[Share to Facebook](#) [Share to Twitter](#) [Share to LinkedIn](#) [Email](#) [Print](#)

Show Share Links

RELATED TOPICS

[Environmental, Social and Governance](#)

FEATURED INSIGHTS

FEATURED INSIGHTS

HELPING YOU STAY AHEAD OF THE BIG ISSUES

BROWSE BY:



-

TECH, DIGITAL & DATA



-

GEOPOLITICS AND BUSINESS



[NEW BUSINESS LANDSCAPE](#)

RELATED ARTICLES



[Japan-Australia Investment Report 2022: Decarbonisation and Energy Security](#)



[Inside Arbitration - Issue 15](#)



[Employment and workplace relations in Australia Legal Guide 2023](#)

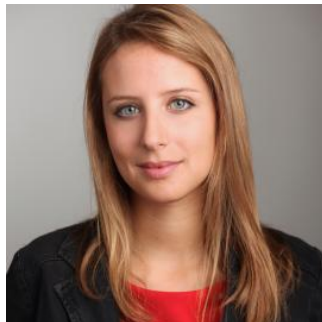
KEY CONTACTS

If you have any questions, or would like to know how this might affect your business, phone, or email these key contacts.



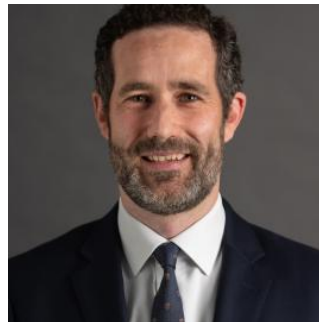
SILKE GOLDBERG
PARTNER, LONDON

+44 20 7466 2612
Silke.Goldberg@hsf.com



REBECCA PERLMAN
PARTNER, LONDON

+44 207 466 2075
Rebecca.Perlman@hsf.com



ANTONY CROCKETT
PARTNER, HONG
KONG

+852 21014111
Antony.Crockett@hsf.com



TIMOTHY STUTT
PARTNER, SYDNEY

+61 2 9225 5794
Timothy.Stutt@hsf.com