

PODCAST SERIES: LISTEN TO KEY DISCUSSIONS ON THE FUTURE OF WORK

01 July 2021 | Insight
Podcasts

To mark the launch of our flagship Future of Work report, this podcast series explores the shape of the modern workplace.

Even before COVID-19, employers and employees were living through a fundamental transformation in the way we work. The pandemic has accelerated change in how we work and connect with staff, clients, suppliers and wider stakeholders. To help you understand what these changes could mean for you and how they could affect your organisation, our podcast series offers global perspectives on some of the issues highlighted in our recent Future of Work [report](#).

Discussions will focus on the potential global restructuring of supply chains, Directors and Officers obligations and liability, the impact on remuneration and incentives, digital transformation of the workplace, and more.

FUTURE OF WORK

RELATED CONTENT

SUBSCRIBE

Our podcast is available on [iTunes](#), [Spotify](#) and [SoundCloud](#) and can be accessed on all devices. You can subscribe and be notified of all future episodes.

SHARE

[Share to Facebook](#) [Share to Twitter](#) [Share to LinkedIn](#) [Email](#) [Print](#)

Show Share Links

FEATURED INSIGHTS

FEATURED INSIGHTS

HELPING YOU STAY AHEAD OF THE BIG ISSUES

BROWSE BY:



-

TECH, DIGITAL & DATA



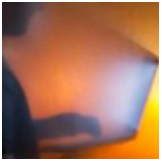
-

GEOPOLITICS AND BUSINESS



NEW BUSINESS LANDSCAPE

RELATED ARTICLES



Landmark Respect at Work Bill passed in Australia



A new normal: data governance and internal stakeholder alignment



UNLOCKING ESG INVESTMENT IN AUSTRALIA

KEY CONTACTS

If you have any questions, or would like to know how this might affect your business, phone, or email these key contacts.



EMMA ROHSLER
REGIONAL HEAD OF
PRACTICE (EMEA) -
EMPLOYMENT
PENSIONS AND
INCENTIVES, PARIS
+33 1 53 57 72 35
Emma.Rohsler@hsf.com



ALEX CRAVERO
DIGITAL LAW LEAD -
UK/US & EMEA,
LONDON
+44 20 7466 2814
alex.cravero@hsf.com



KATE MACMILLAN
CONSULTANT,
LONDON
+44 20 7466 3737
kate.macmillan@hsf.com



NATALIE GASPAR
PARTNER,
MELBOURNE
+61 3 9288 1091
Natalie.Gaspar@hsf.com